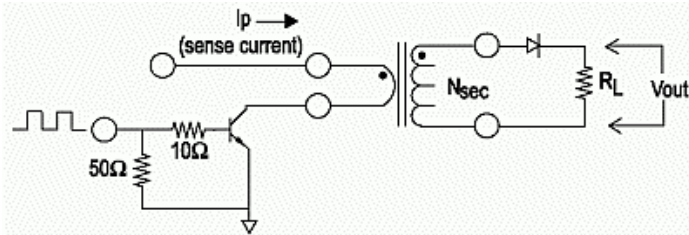
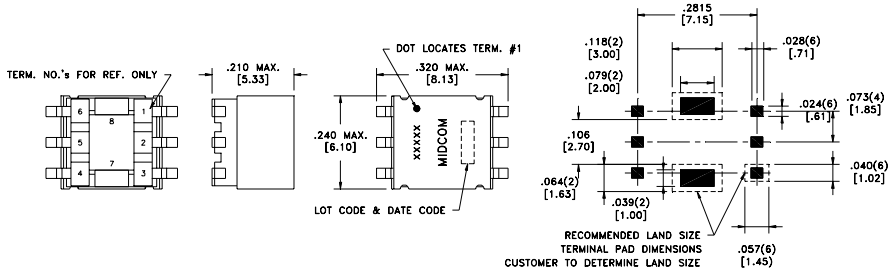


EE5 Current Sense Transformers



Features

- SMD Design
- Pick and place compatible
- 250kHz and above operating frequency
- Small footprint
- Custom designs available
- Designed for switching power supply applications

Applications

- Isolated current feedback in switching applications
- Load drop detection
- Circuit overload detection
- Motor operation monitoring
- Industrial equipment

Environmental Specifications

- Operating Temp: -40°C to +85°C
- Storage Temp: -40°C to +125°C

Packaging

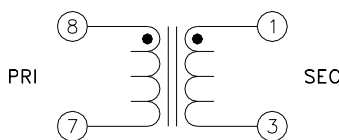
- Parts are packaged in 24/32mm embossed carrier tape per EIA-481-3
- 800 parts per 13" reel

Part Number	Turns Ratio (Pri:Sec)	L _{SEC} (μH) min	DCR _{SEC} (Ω) max	R _{L-Sec} (Ω) max	Schematic
31332R	1:125	3000	7.70	125	1
31333R	1:100	2000	5.87	100	1
31334R	1:70	980	4.75	70	1
31719R	1:50	580	1.66	50	2
31335R	1:40	320	1.35	40	1
31336R	1:30	180	1.00	30	1
31995R	1:20	80	0.55	20	1

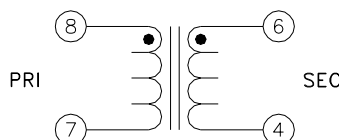
Notes:

Specifications at 25°C

1. Output=1Volt/Amp at rate R_L
2. 6 Amps max. peak sense current
3. 500VAC max. breakdown voltage between primary and secondary.



Schematic 1



Schematic 2

Details subject to change. Contact your Midcom sales representative for additional information. Dimensions: in/mm. All tolerances are ±.010/0.25 and electrical specifications are @25°C unless otherwise specified.