

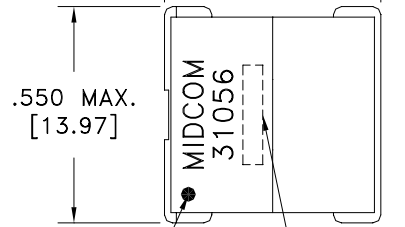
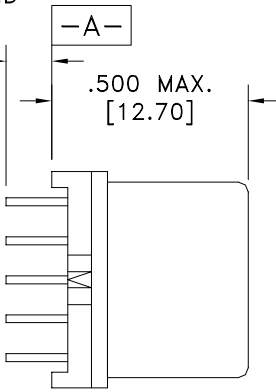
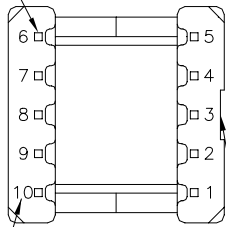
PART MUST INSERT FULLY TO SURFACE A IN RECOMMENDED GRID

.021 SQ.(10)  
[.53]

.100 MIN.  
[2.54]

.500 MAX.  
[12.70]

.550 MAX.  
[13.97]

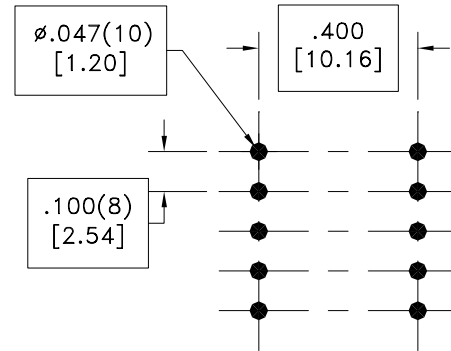
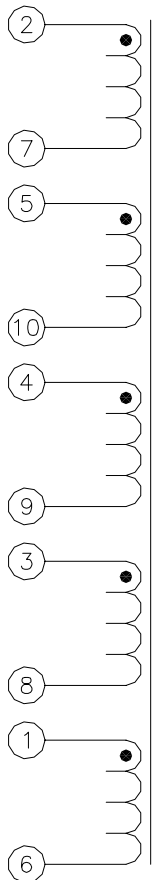


DOT LOCATES TERM. #1

NOTCH LOCATES TERM. 1-5 SIDE

TERM. NO.'s FOR REF. ONLY

LOT CODE & DATE CODE



RECOMMENDED  
P.C. PATTERN, COMPONENT SIDE

ELECTRICAL SPECIFICATIONS @ 25°C unless otherwise noted:

D.C. RESISTANCE (@20°C):	0.200 ohms max. for any winding.
DIELECTRIC RATING:	500VAC for 1 second between all windings.
INDUCTANCE:	4.7uH ±15%, 10kHz, 10mVAC, 2-7, Ls.
URNS RATIO:	(2-7):(5-10) = 1:1, ±1%. (2-7):(4-9) = 1:1, ±1%. (2-7):(3-8) = 1:1, ±1%. (2-7):(1-6) = 1:1, ±1%.

Midcom, Inc.  
Watertown, SD USA  
Toll Free: 800-643-2661  
Fax: 605-886-4486

Unless otherwise specified:  
Tolerances: Fractions: ±1/64  
Angles: ±1° Decimals: ±.005(.127mm)

DRAWING TITLE  
**TRANSFORMER**

**Midcom**

DRAWING NO. <b>31056</b>	REV. <b>6A</b>
-----------------------------	-------------------

REVISIONS: SEE SHEET 1

SCALE --- SHEET 2 OF 5

This drawing is dual dimensioned.  
Dimensions in brackets are in millimeters.

DWG.# 31056