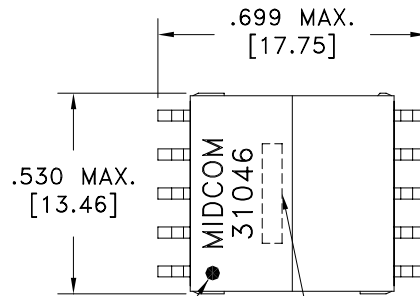
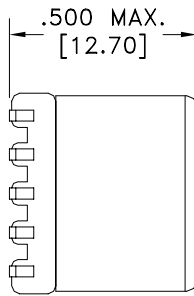
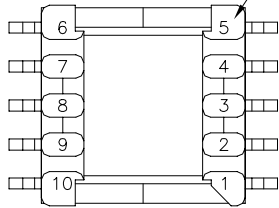
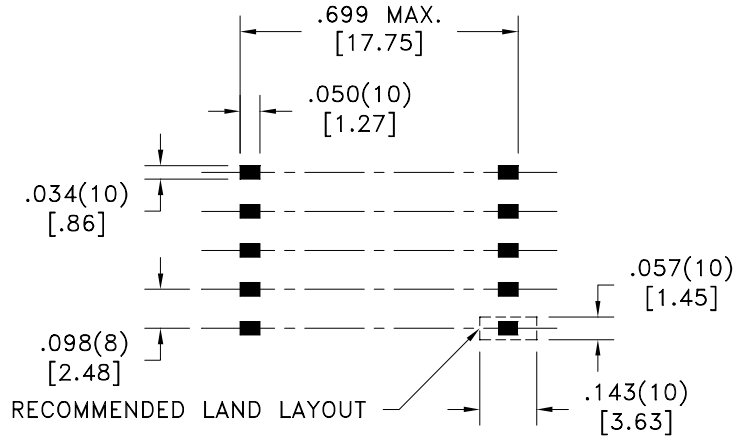


TERM. NO.'s FOR REF. ONLY

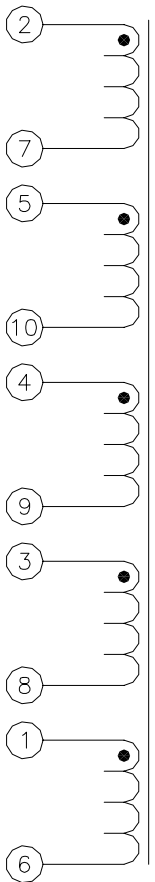


DOT LOCATES TERM. #1

LOT CODE & DATE CODE



TERMINAL PAD DIMENSIONS  
CUSTOMER TO DETERMINE LAND SIZE



ELECTRICAL SPECIFICATIONS @ 25°C unless otherwise noted:

D.C. RESISTANCE (@20°C):	0.200 ohms max. for any winding.
DIELECTRIC RATING:	500VAC for 1 second between all windings.
INDUCTANCE:	200uH min., 10kHz, 10mVAC, 2-7, Ls.
URNS RATIO:	(2-7):(5-10) = 1:1, ±1%. (2-7):(4-9) = 1:1, ±1%. (2-7):(3-8) = 1:1, ±1%. (2-7):(1-6) = 1:1, ±1%.

Midcom, Inc.  
Watertown, SD USA  
Toll Free: 800-643-2661  
Fax: 605-886-4486

Unless otherwise specified:  
Tolerances: Fractions: ±1/64  
Angles: ±1° Decimals: ±.005(.127mm)

DRAWING TITLE  
**TRANSFORMER**

**Midcom**

DRAWING NO.  
**31046R**

REV.  
**6A**

REVISIONS: SEE SHEET 1

SCALE ---

SHEET 2 OF 5

This drawing is dual dimensioned.  
Dimensions in brackets are in millimeters.

DWG.# 31046R