



Integrated Gigabit Surface Mount RJ45

Midcom

LANDatacom

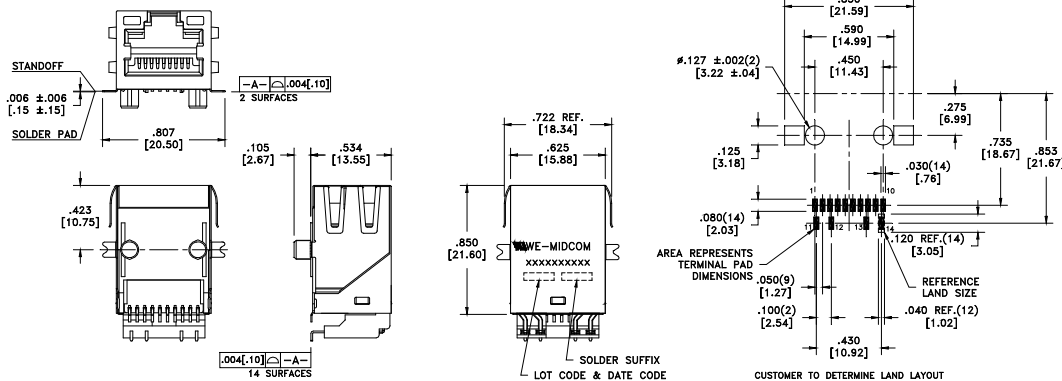
Typical Electrical Characteristics¹

| | | |
|-----------------------|-------------|------------------------|
| Inductance | 350uH Min. | 0.1Vrms, 100kHz, 8mADC |
| Dielectric Rating | 1500VAC | for 1 minute |
| Turns Ratio | 1:1 | ±2% |
| Insertion Loss | -1.0dB max. | 1MHz-100MHz |
| Return Loss | -18dB min. | 1MHz-30MHz |
| | -15dB min. | 30MHz-60MHz |
| | -12dB min. | 60MHz-80MHz |
| Cross Talk | -37dB typ. | 1MHz-30MHz |
| | -32dB typ. | 30MHz-60MHz |
| | -27dB typ. | 60MHz-100MHz |
| Common Mode Rejection | -30dB typ. | 1MHz-100MHz |

Note 1: Electrical Characteristics for individual part may vary; see specification sheet for actual values.

Features

- Surface Mount
- Optional PoE compatible designs
- Optional pin-outs and LEDs
- Industry standard connector footprint
- Optimum performance
- Cost Effective
- RoHS compliant



| Part Number | LED (left-right) | Tab Direction | EMI Tabs | Temp Range |
|----------------|------------------|---------------|----------|--------------|
| MIC38121-5154W | Yellow-Green | Up | Yes | 0°C to +70°C |

