



Discrete Single Port 10/100 Medical High Voltage

Midcom

LANDatacom

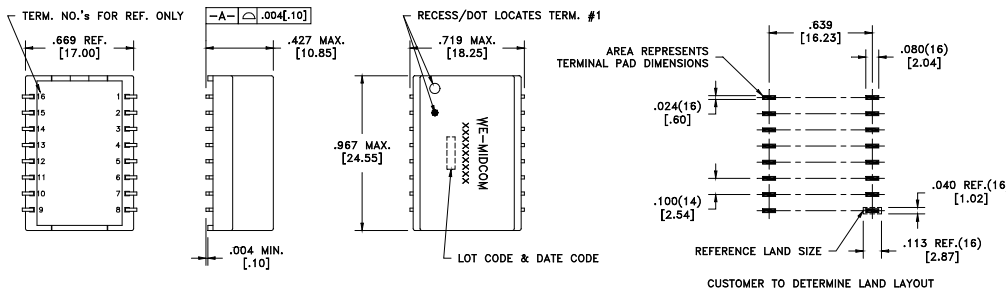
Typical Common Electrical Characteristics¹

Inductance	350uH Min.	0.1Vrms, 100kHz, 8mADC
Dielectric Rating	4000VAC	for 1 minute
Insertion Loss	-1.2dB max.	500kHz-100MHz
Return Loss	-18dB min.	500kHz-30MHz
	-15dB min.	30MHz-45MHz
	-13dB min.	45MHz-60MHz
	-10dB min.	60MHz-80MHz
Cross Talk	-40dB min.	1MHz-100MHz
Common Mode Rejection	-30dB min.	500kHz-100MHz
Diff. To Common Mode Rejection	-33dB min.	500kHz-100MHz

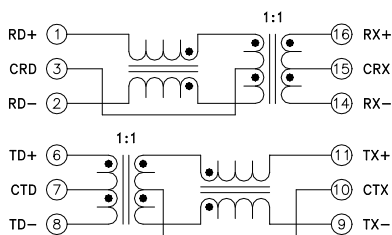
Note1: See specification sheet for actual electrical characteristics

Features

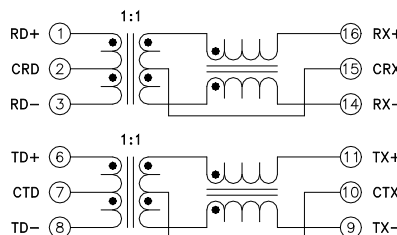
- Designed for Medical Applications
- Meets IEEE 802.3 standard
- Surface mount
- Optional pin-outs
- Optimum performance
- Standard and PoE versions
- Cost Effective
- RoHS compliant
- Operating Temp 0°C to +70°C



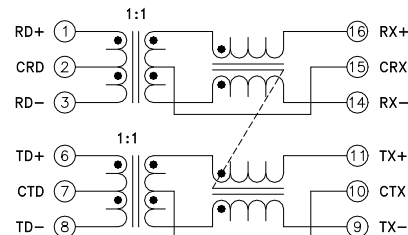
Part Number	Transmit Turns Ratio	AutoMDIX Compatible	Power Capability	Schematic
749014011	1CT:1CT	No	Standard	1
479014012	1CT:1CT	Yes	Standard	2
749014013	1CT:1CT	Yes	PoE	3



Schematic 1



Schematic 2



Schematic 3

Note1: See specification sheet for individual part number specifications.
 Note2: The 000-7342-37 is missing terminals 4, 5, 12 and 13.