

# Discrete Single Port 10/100 Base-T PCMCIA AEDFP-G16

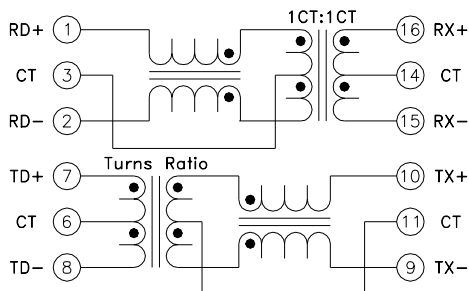
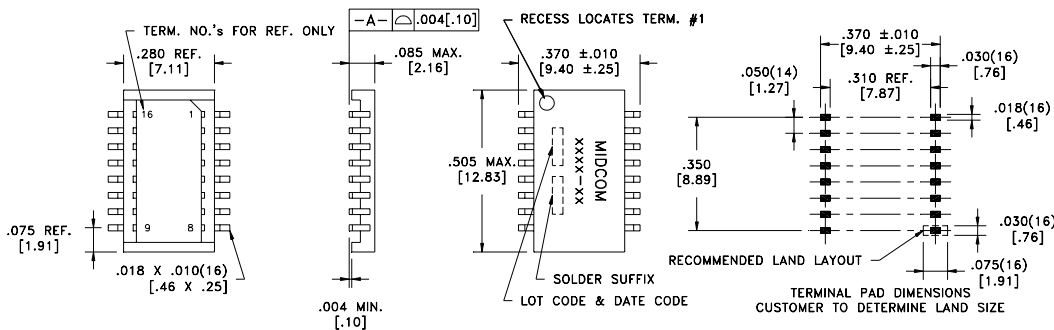
## Typical Common Electrical Characteristics<sup>1</sup>

Inductance	350uH Min.	0.1Vrms, 100kHz, 8mADC
Dielectric Rating	1500VAC	for 1 minute
Insertion Loss	-1.1dB max.	100kHz-100MHz
Return Loss	-17dB min.	1MHz-30MHz
	-15.5dB min.	30MHz-45MHz
	-13dB min.	45MHz-60MHz
	-11dB min.	60MHz-80MHz
Cross Talk	-30dB min.	100kHz-100MHz
Common Mode Rejection	-30dB min.	100kHz-100MHz

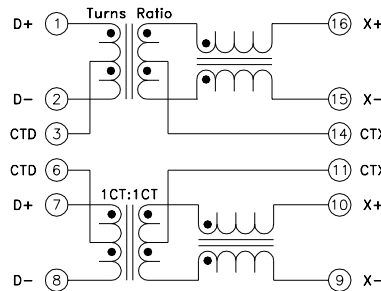
## Features

- PCMCIA compatible profile
- Meets IEEE 802.3 standard
- Surface mount
- Optional pin-outs
- Industry standard connector footprint
- Optimum performance
- Cost Effective
- Both RoHS compliant and lead-terminal parts available

Part Number	Transmit Turns Ratio	AutoMDIX Compatible	Operating Temp. Range	Schematic
000-7112-35	1CT:1CT	No	0°C to +70°C	1
000-7148-35	1CT:1.4CT	No	0°C to +70°C	2
000-7218-35	1CT:1CT	Yes	0°C to +70°C	2



Schematic 1



Schematic 2

Note1: The 000-7342-37 is missing terminal 4, 5, 12 and 13.

Note2: Typical min. and max. electrical characteristics only, see specification sheets for actual characteristics.

Details subject to change. Contact your Midcom sales representative for additional information. Dimensions: in/mm. All tolerances are ±.010/0.25 and electrical specifications are @25°C unless otherwise specified.