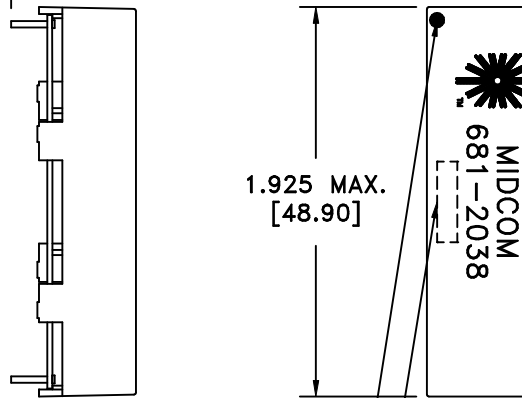


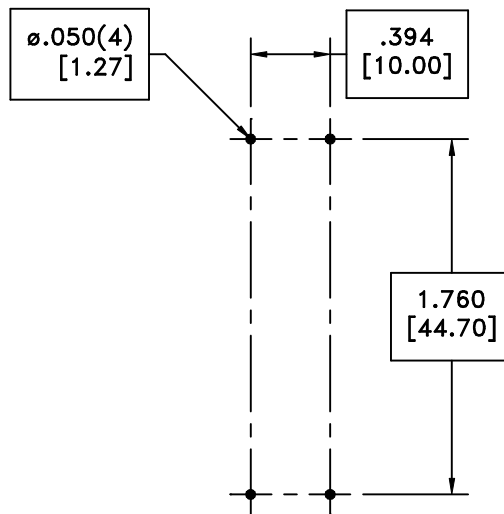
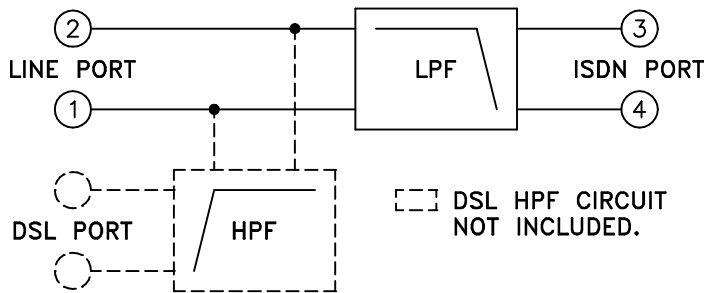
.138 ±.020 [3.50 ±.50] .492 MAX. [12.50] .510 MAX. [12.95]



1.925 MAX. [48.90]

DOT LOCATES TERM. #1

LOT CODE & DATE CODE



RECOMMENDED
P.C. PATTERN, COMPONENT SIDE

ELECTRICAL SPECIFICATIONS @ 25°C unless otherwise noted:

- D.C. RESISTANCE (@20°C): 12.5 ohms max.
- INSERTION LOSS: -0.8dB max., 1 - 40kHz.
-2.0dB max., 40 - 80kHz.
- RETURN LOSS: -16dB min., 1 - 40kHz.
-14dB min., 40 - 80kHz.
- STOP BAND ATTENUATION: -65dB min., 0.15 - 2.2MHz.
-45dB min., 2.2 - 12MHz.
-30dB min., 12 - 30MHz.
- LINE IMPEDANCE: 135 ohms.
- LOOP CURRENT: 100mADC.
- OPERATING TEMPERATURE RANGE: 0°C to +70°C.

Designed to comply with ETSI 101-952-1-3 2B1Q ADSL/ISDN splitter.

Midcom, Inc. Watertown, SD USA Toll Free: 800-643-2661 Fax: 605-886-4486	Unless otherwise specified: Tolerances: Fractions: ±1/64 Angles: ±1° Decimals: ±.005 [.13]			DWG.# 681-2038
	DRAWING TITLE <h2 style="text-align: center;">ADSL</h2> <h3 style="text-align: center;">DSL/ISDN SPLITTER</h3>	DRAWING NO. <h2 style="text-align: center;">681-2038</h2>	REV. 6A 11/06	
This drawing is dual dimensioned. Dimensions in brackets are in millimeters.	REVISIONS: SEE SHEET 1	SCALE ---	SHEET 2 OF 9	