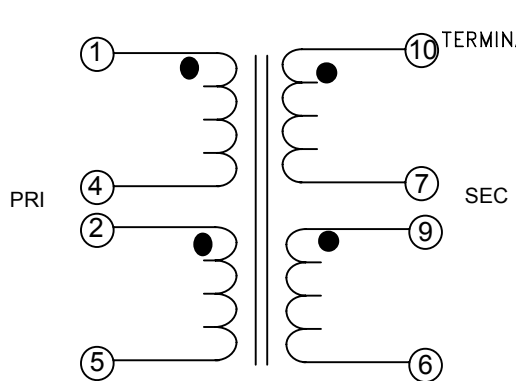
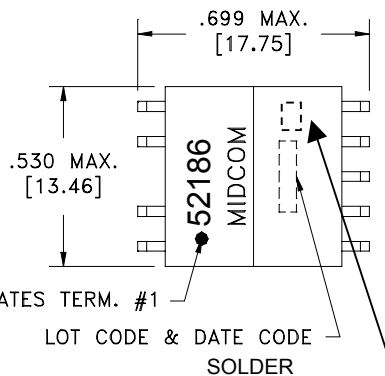
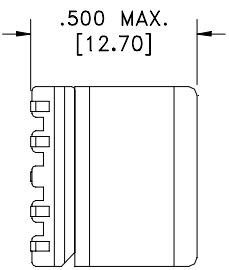
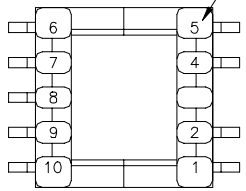
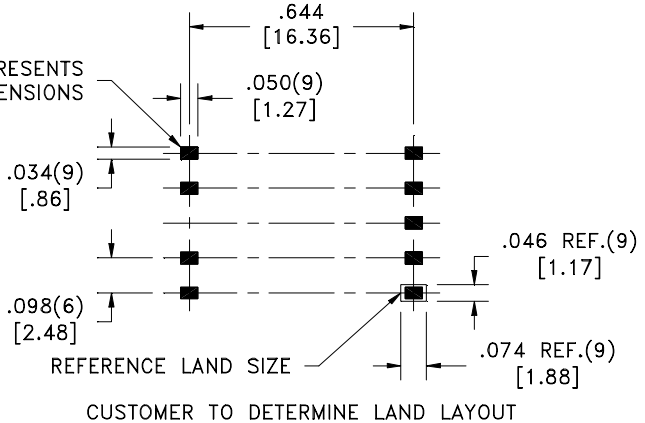


SOLDER SUFFIX	CUSTOMER TERMINAL	RoHS	LEAD(Pb)-FREE
	Sn63%, Pb37%	No	No
LF1	Sn96%, Ag4%	Yes	Yes

TERM. NO.'s FOR REF. ONLY



AREA REPRESENTS TERMINAL PAD DIMENSIONS



# Preliminary!

**ELECTRICAL SPECIFICATIONS @ 25°C unless otherwise noted:**

LONGITUDINAL BALANCE:	40.0 dB min., 20k-1.1MHz, per ITU Method.
D.C. RESISTANCE (@20°C):	1-4 , 0.44 Ohms ±10%. 2-5 , 0.42 Ohms ±10%. 6-9 , 0.25 Ohms ±10%. 7-10 , 0.25 Ohms ±10%.
DIELECTRIC RATING:	1500VAC, 1 minute tested by applying 1875VAC for 1 second between pins 1-10(2+4, 7+9).
INDUCTANCE:	410µH ±5%, 10kHz, 100mVAC, 0mADC, 1-5(2+4), Ls.
LEAKAGE INDUCTANCE:	6.5µH max., 100kHz, 100mVAC, 1-5(2+4,7+9,6+10), Ls.
TURNS RATIO:	( 1-5 ):( 10-6 ) , ( 2 ):(1.00), tie(2+4,7+9), ±1%.
TOTAL HARMONIC DISTORTION:	-85 dB max., 30kHz, 20dBm, 25 ohm load, 100 ohm input , , tie(2+4,7+9).

Designed to comply with the following requirements as defined by IEC60950-1, EN60950-1, UL60950-1/CSA60950-1 and AS/NZS60950.1:  
- Supplementary insulation for a primary circuit at a working voltage of 250Vrms.

Midcom, Inc. Watertown, SD USA Toll Free: 800-643-2661 Fax: 605-886-4486	Unless otherwise specified, tolerances are as follows: Angles: ±1°      Fractions: ±1/64 Decimals: ±.005(.127mm)		Midcom, Inc.	
	Drawing Title <b>Transformer</b>		Drawing Number <b>52186R/-LF1</b>	Rev. <b>00</b>
Revisions: See Sheet 1		Scale ----	Sheet 2 of 5	
Engineer:PLP			02/09/2006	

This drawing is dual dimensioned.  
Dimensions in brackets are in millimeters