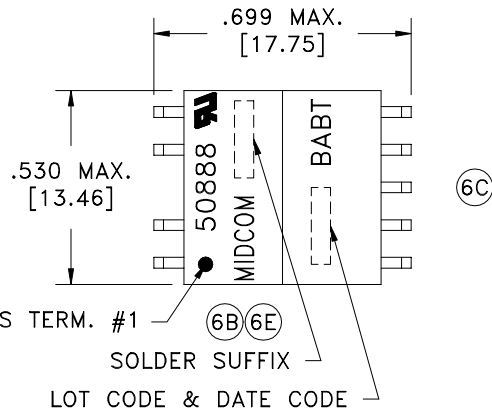
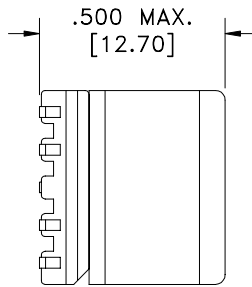
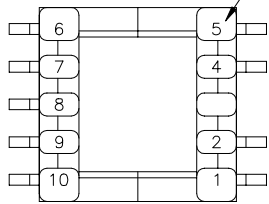
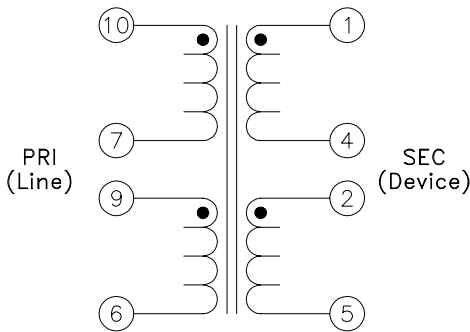


SOLDER SUFFIX	CUSTOMER TERMINAL	RoHS	LEAD(Pb)-FREE	(6E)
	Sn63%, Pb37%	No	No	
LF1	Sn96%, Ag4%	Yes	Yes	

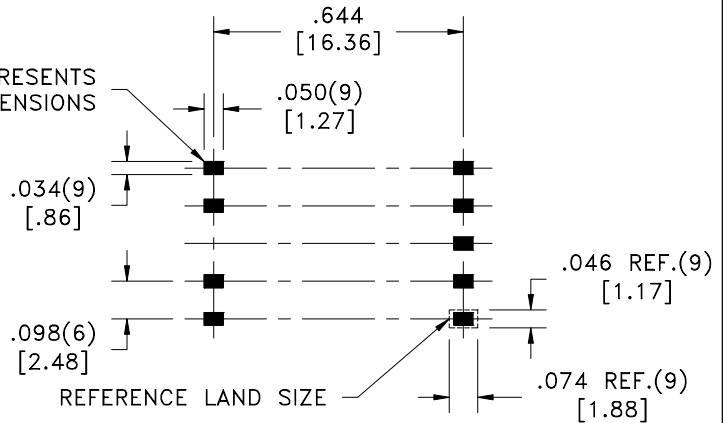
TERM. NO.'s FOR REF. ONLY



DOT LOCATES TERM. #1 (6B)(6E)
SOLDER SUFFIX
LOT CODE & DATE CODE



AREA REPRESENTS TERMINAL PAD DIMENSIONS



(6C) CUSTOMER TO DETERMINE LAND LAYOUT

ELECTRICAL SPECIFICATIONS @ 25°C unless otherwise noted:

IMPEDANCE:	Designed to reflect 100 ohms on the PRI with 25 ohm load on SEC.
LONGITUDINAL BALANCE:	50dB min., 150k - 1MHz, per ITU Method (L->M).
D.C. RESISTANCE (@20°C):	10-7, 0.310 ohms ±10%. 1-4, 0.160 ohms ±10%. 9-6, 0.310 ohms ±10%. 2-5, 0.160 ohms ±10%.
INSERTION LOSS:	0.5dB max., 772kHz, 25 ohm load.
(6B) DIELECTRIC RATING:	1500VAC, 1 minute tested by applying 1875VAC for 1 second between 10-1(tie 7+9, 2+4).
INDUCTANCE:	100uH ±5%, 10kHz, 100mVAC, 10-6(tie 7+9), Ls.
LEAKAGE INDUCTANCE:	10uH max., 100kHz, 100mVAC, 10-6(tie 7+9, 1+5, 2+4), Ls.
TURNS RATIO:	(10-7):(9-6) = 1:1, ±1%. (10-6):(1-5) = 2:1, tie(7+9, 2+4), ±1%.
INTERWINDING CAPACITANCE:	50pF max., 10kHz, 1.0VAC, 10-1(tie 7+9, 2+4), Cs.
TOTAL HARMONIC DISTORTION:	-80dB max., 200kHz, 4.25Vrms across PRI, 25 ohm load, 100 ohm input, tie(7+9, 2+4).
OPERATING TEMPERATURE RANGE:	-40°C to +85°C.

AGENCY NUMBER	
BABT	NC/012203
UL 60950-1	E205930
CSA 60950-1 (Via CUL)	E205930
IEC 60950-1 (Via CB cert.)	US/9168B/UL
ACA/AUSTEL (Via CB cert.)	US/9168B/UL
JAPAN (Via CB cert.)	US/9168B/UL

(6B)(6F) Designed to comply with the following requirements as defined by IEC60950-1, EN60950-1, UL60950-1/CSA60950-1 and AS/NZS60950.1:
- Supplementary insulation for a primary circuit at a working voltage of 250Vrms.
DETAILS SUBJECT TO CHANGE

Midcom, Inc.
Watertown, SD USA
Toll Free: 800-643-2661
Fax: 605-886-4486

Unless otherwise specified:
Tolerances: Fractions: ±1/64
Angles: ±1° Decimals: ±.005 [1.13]

DRAWING TITLE

TRANSFORMER

REVISIONS: SEE SHEET 1

Midcom

DRAWING NO. **50888R/-LF1** (6E) REV. 6F/06

SCALE --- SHEET 2 OF 6

This drawing is dual dimensioned.
Dimensions in brackets are in millimeters.

DWG.# 50888R/-LF1