

PART MUST INSERT FULLY TO SURFACE A IN RECOMMENDED GRID

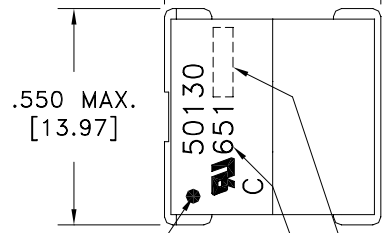
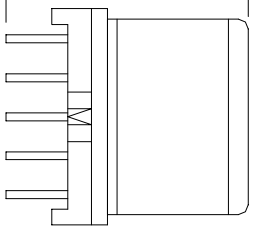
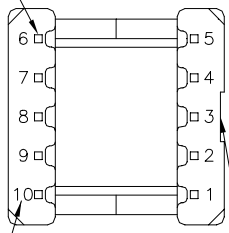
.021 SQ.(10)
[.53]

.100 MIN.
[2.54]

-A-

.500 MAX.
[12.70]

.550 MAX.
[13.97]



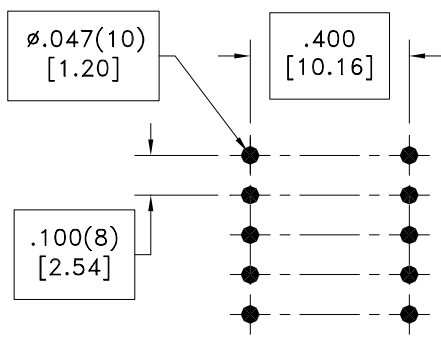
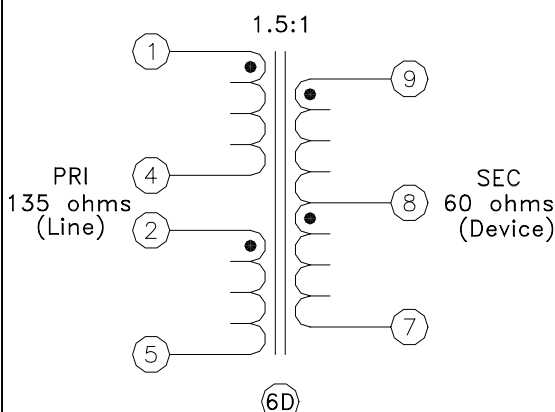
DOT LOCATES TERM. #1

EIA CODE

LOT CODE & DATE CODE

TERM. NO.'s FOR REF. ONLY

NOTCH LOCATES TERM. 1-5 SIDE



RECOMMENDED P.C. PATTERN, COMPONENT SIDE

ELECTRICAL SPECIFICATIONS @ 25°C unless otherwise noted:

- 6C LONGITUDINAL BALANCE: 50dB min., 20k - 300kHz, per ITU Method (L->M).
- D.C. RESISTANCE (@20°C): PRI, 5.0 ohms max.
SEC, 3.0 ohms max.
- 6D DIELECTRIC RATING: 1500VAC, 1 minute tested by applying 1800VAC for 1 second between 1-9; 2-9.
- INDUCTANCE: 3.24mH ±5%, 10kHz, 100mVAC, 0/160mADC, 1-5(tie 2+4), Ls, @ 20°. 3.24mH ±10%, @ -40° and +85°C.
- LEAKAGE INDUCTANCE: 30uH typ., 10kHz, 100mVAC, 1-5(tie 2+4, 7+9), Ls.
- URNS RATIO: (PRI):(SEC) = 1.5:1, ±1%.
- OPERATING TEMPERATURE RANGE: -40°C to +85°C.

6D Designed to comply with the following requirements as defined by IEC950, EN60950, UL1950/CSA950 and AS/NZS3260:
 - TNV-1 to SELV isolation.
 - TNV-3 to TNV-2 isolation.

6D Approved for use with Analog Devices HDSL IC: AD8042.

AGENCY NUMBER	
UL 1950	E205930
CSA 950 (Via CUL)	E205930

Midcom, Inc. Watertown, SD USA Toll Free: 800-643-2661 Fax: 605-886-4486	Unless otherwise specified: Tolerances: Fractions: ±1/64 Angles: ±1° Decimals: ±.005(.127mm) DRAWING TITLE <h2 style="text-align: center;">TRANSFORMER</h2>	<h1 style="font-family: serif;">Midcom</h1>
This drawing is dual dimensioned. Dimensions in brackets are in millimeters.	REVISIONS: SEE SHEET 1	DRAWING NO. <h2 style="font-size: 2em;">50130</h2>
		REV. <h2 style="font-size: 2em;">6D</h2>
		SCALE --- SHEET 2 OF 5

DWG.# 50130