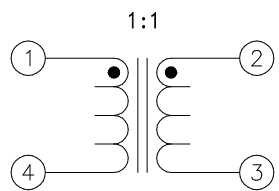
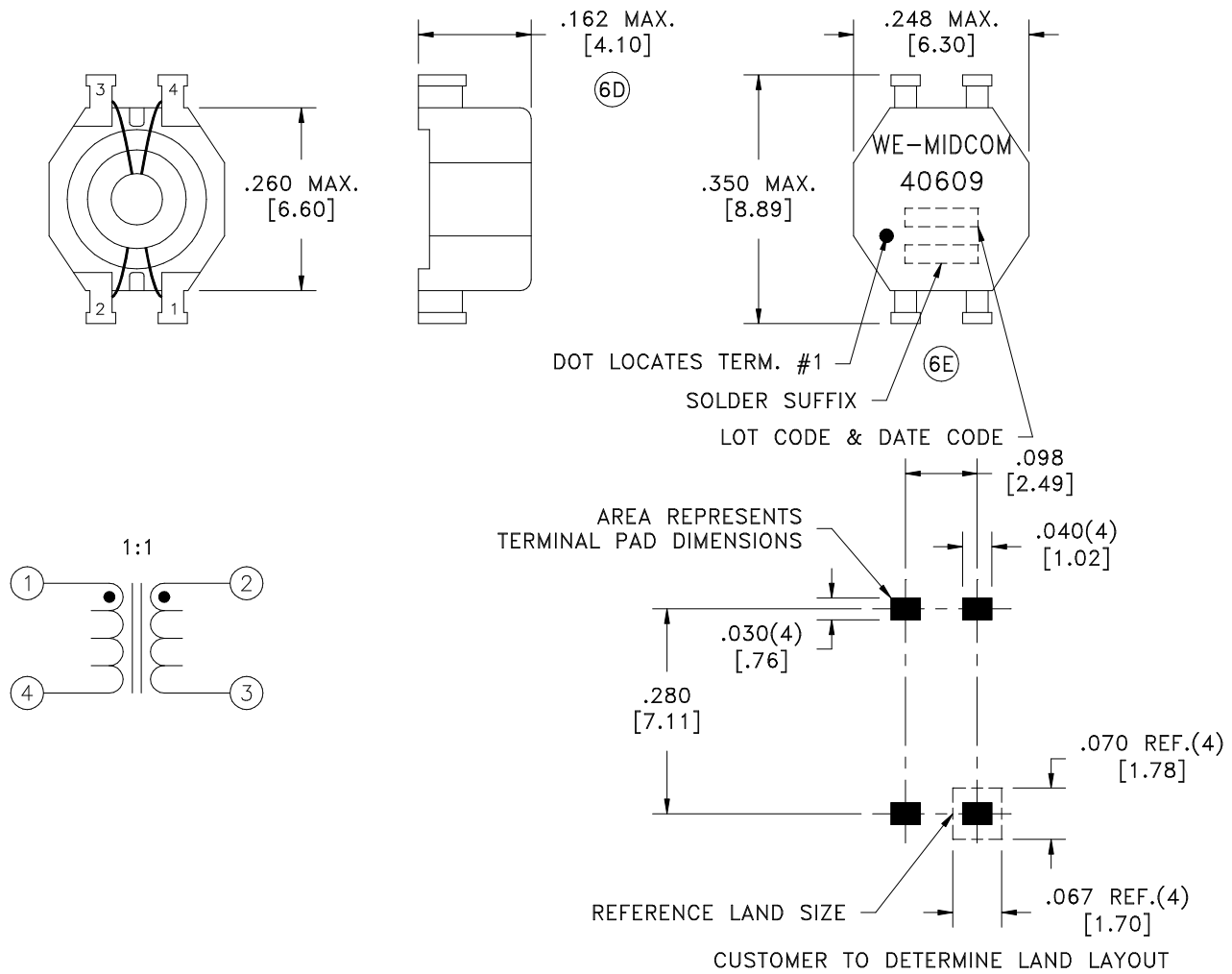



SOLDER SUFFIX	CUSTOMER TERMINAL	RoHS	LEAD(Pb)-FREE	(6E)
	Sn63%, Pb37%	No	No	
LF2	Sn98%, Cu2%	Yes	Yes	



**ELECTRICAL SPECIFICATIONS @ 25°C unless otherwise noted:**

- D.C. RESISTANCE (@20iāC): 1-4, 0.70 ohms max.  
2-3, 0.70 ohms max.
- DIELECTRIC RATING: 1500VAC, 1 minute tested by applying 1875VAC for 1 second between 1-2.
- INDUCTANCE: 4.7mH +50/-30%, 10kHz, 100mVAC, 1-4, Ls.
- LEAKAGE INDUCTANCE: 0.25uH typ.
- D.C. LOOP CURRENT: 350mADC.
- URNS RATIO: (1-4):(2-3) = 1:1, iā1%.

DETAILS SUBJECT TO CHANGE

Unless otherwise specified: Tolerances: Angles: $\pm 1^\circ$ Fractions: $\pm 1/64$ Decimals: $\pm .005 [1.3]$	DRAWING TITLE <h2 style="text-align: center;">INDUCTOR</h2>	 www.midcom-inc.com	DWG.# <b>40609R/-LF2</b>
	eiSos p/n:		
This drawing is dual dimensioned. Dimensions in brackets are in millimeters.	REVISIONS: SEE SHEET 1	SCALE ---	SHEET 2 OF 5