

PART MUST INSERT FULLY TO SURFACE A IN RECOMMENDED GRID

* DIMENSION MAY BE EXCEEDED WITH SOLDER ONLY

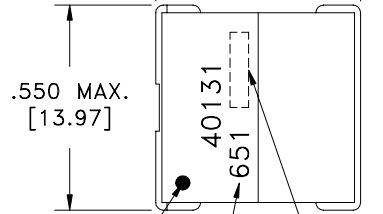
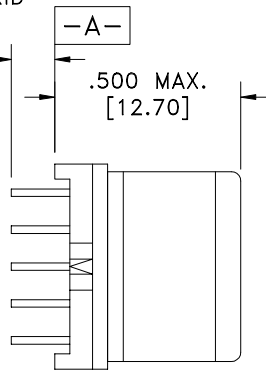
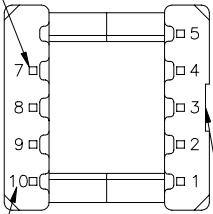
.021 SQ.(9)
[.53]

.100/.130 *
[2.54/3.30]

(6B)(6C)

.500 MAX.
[12.70]

.550 MAX.
[13.97]



(6B)

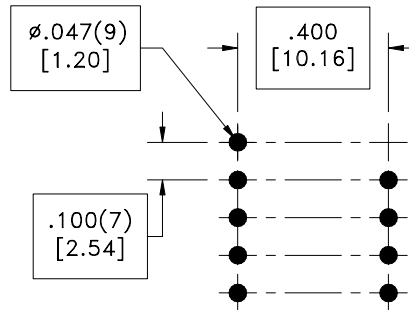
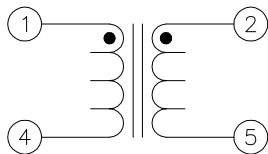
DOT LOCATES TERM. #1

EIA CODE

LOT CODE & DATE CODE

NOTCH LOCATES TERM. 1-5 SIDE

TERM. NO.'s FOR REF. ONLY



RECOMMENDED P.C. PATTERN, COMPONENT SIDE

(6B)

ELECTRICAL SPECIFICATIONS @ 25°C unless otherwise noted:

- D.C. RESISTANCE (@20°C): 1-4, 4.75 ohms ±10%.
2-5, 4.75 ohms ±10%.
- DIELECTRIC RATING: 850VDC for 1 second between 1-2.
- INDUCTANCE: 5.5mH ±10%, 10kHz, 1.0VAC, 0/160mADC, 1-4; 2-5, Ls.
- MAXIMUM D.C. LINE CURRENT: 80mADC, 1-5(tie 2+4).
- TURNS RATIO: (1-4):(2-5) = 1:1, ±1%.
- RESONANT FREQUENCY: 220kHz min., 1-4 & 2-5.

Midcom, Inc.
Watertown, SD USA
Toll Free: 800-643-2661
Fax: 605-886-4486

Unless otherwise specified:
Tolerances: Fractions: ±1/64
Angles: ±1° Decimals: ±.005[.13]

DRAWING TITLE

INDUCTOR

REVISIONS: SEE SHEET 1

Midcom

DRAWING NO.

40131

REV.

6C
10/03

SCALE ---

SHEET 2 OF 5

This drawing is dual dimensioned.
Dimensions in brackets are in millimeters.

DWG # 40131